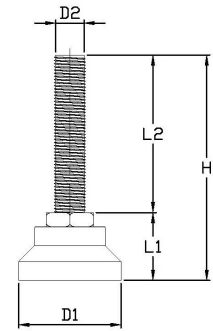




LEVELING FEET

Heavy duty aluminum base leveling feet L series

Application: Clean room equipment, aluminum extrusion equipment, high-load mechanical equipment

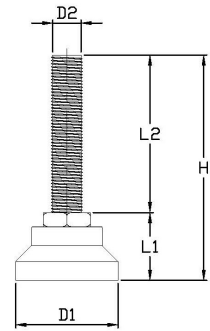


Unit: mm

Item No.	Bolt Material	Base Material	D1	L1	D2	L2	H	Load capacity (Kg)
L6016080	Zinc plated (SS41)	Aluminum	65	43	M16 X P2.0	80	123	1500
L6016100						100	143	
L6016130						130	173	
L6016150						150	193	
L6016180						180	223	
L6016200						200	243	
L6016250						250	293	
L6020080						80	123	
L6020100				100	143			
L6020130				130	173			
L6020150				150	193			
L6020180				180	223			
L6020200				200	243			
L6024100				48	M24 X P3.0	100	148	3000
L6024150						150	198	
L6030100						M30 X P3.5	100	
L6030150	150	198						
L6036100	M36 X P4.0	100	148	4000				
L605100	46	5/8"-11WT	100	146	1500			
L605150			150	196				
L606100	44	3/4"-10WT	100	144	2000			
L606150			150	194				

Heavy duty aluminum base leveling feet L series

Application: Clean room equipment, aluminum extrusion equipment, high-load mechanical equipment

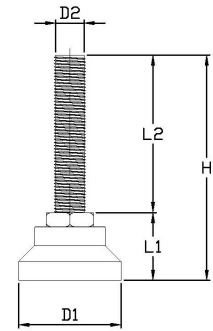


Unit: mm

Item No.	Bolt Material	Base Material	D1	L1	D2	L2	H	Load capacity (Kg)	
L9016080	Zinc plated (SS41)	Aluminum	90	43	M16 X P2.0	80	123	1500	
L9016100						100	143		
L9016130						130	173		
L9016150						150	193		
L9016180						180	223		
L9016200						200	243		
L9016250						250	293		
L9020080						M20 X P2.5	80		123
L9020100				100	143				
L9020130				130	173				
L9020150				150	193				
L9020180				180	223				
L9020200				200	243				
L9024100				M24 X P3.0	100		148	3000	
L9024150					150		198		
L9030100					M30 X P3.5	100	148		
L9030150			150	198					
L9036100			M36 X P4.0	100	148	4500			
L905100			5/8" ---11WT	100	146	1500			
L905150				150	196				
L906100	3/4" ---10WT	100	145	2000					
L906150		150	195						
L12020080	120	43	M20 X P2.5	80	123	2000			
L12020100				100	143				
L12020130				130	173				
L12020150				150	193				
L12020180				180	223				
L12020200				200	243				
L12024100				M24 X P3.0	100		148	3000	
L12024150					150		198		
L12030100		M30 X P3.5	100		148				
L12030150			150	198					
L12036100		M36 X P4.0	100	148	4500				
L1206100		3/4" ---10WT	100	145	2000				
L1206150			150	195					

Heavy duty aluminum base leveling feet LS series

Application: Clean room equipment, aluminum extrusion equipment, high-load mechanical equipment

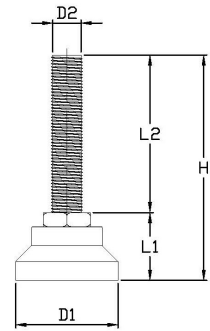


Unit: mm

Item No.	Bolt Material	Base Material	D1	L1	D2	L2	H	Load capacity (Kg)		
LS6016080	Stainless steel (SUS304)	Aluminum	65	43	M16 X P2.0	80	123	1500		
LS6016100						100	143			
LS6016130						130	173			
LS6016150						150	193			
LS6016180						180	223			
LS6016200						200	243			
LS6020080						M20 X P2.5	80		123	2000
LS6020100							100		143	
LS6020130				130	173					
LS6020150				150	193					
LS6020180				180	223					
LS6020200				200	243					
LS6024100				48	M24 X P3.0	100	148	3000		
LS6024150						150	198			
LS6030100	M30 X P3.5	100	148							
LS6030150		150	198							

Heavy duty aluminum base leveling feet LS series

Application: Clean room equipment, aluminum extrusion equipment, high-load mechanical equipment

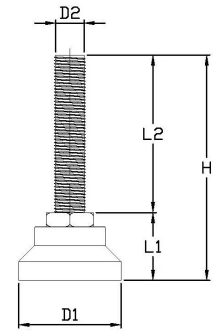
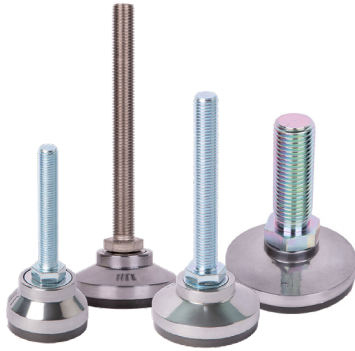


Unit: mm

Item No.	Bolt Material	Base Material	D1	L1	D2	L2	H	Load capacity (Kg)	
LS9016080	Stainless steel (SUS304)	Aluminum	90	43	M16 X P2.0	80	123	1500	
LS9016100						100	143		
LS9016130						130	173		
LS9016150						150	193		
LS9016180						180	223		
LS9016200						200	243		
LS9020080					M20 X P2.5	80	123	2000	
LS9020100						100	143		
LS9020130						130	173		
LS9020150						150	193		
LS9020180			180	223	2000				
LS9020200			200	243					
LS9024100			M24 X P3.0	100		148	3000		
LS9024150				150		198			
LS9030100			M30 X P3.5	100	148	3000			
LS9030150				150	198				
LS12020080			120	43	M20 X P2.5		80	123	2000
LS12020100							100	143	
LS12020130						130	173		
LS12020150						150	193		
LS12020180	180	223							
LS12020200	200	243							
LS12024100	M24 X P3.0	100			148	3000			
LS12024150		150			198				
LS12030100	M30 X P3.5	100			148		3000		
LS12030150		150			198				

Heavy duty aluminum base leveling feet LR series

Application: Clean room equipment, aluminum extrusion equipment, high-load mechanical equipment

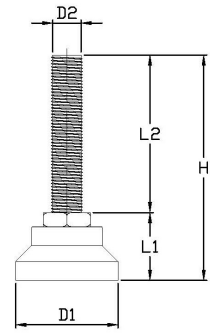
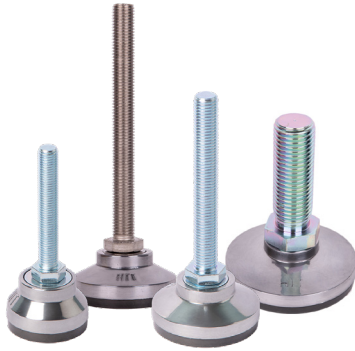


Unit: mm

Item No.	Bolt Material	Base Material	D1	L1	D2	L2	H	Load capacity (Kg)	
L6016080R	Zinc plated (SS41)	Aluminum alloy with rubber pad	65	51	M16 X P2.0	80	131	500	
L6016100R						100	151		
L6016130R						130	181		
L6016150R						150	201		
L6016180R						180	231		
L6016200R						200	251		
L6016250R						250	301		
L6020080R						M20 X P2.5	80		131
L6020100R				100	151				
L6020130R				130	181				
L6020150R				150	201				
L6020180R				180	231				
L6020200R				200	251				
L6024100R				M24 X P3.0	100		156	800	
L6024150R					150		206		
L6030100R					M30 X P3.5	100	156		
L6030150R	150	206							
L6036100R	M36 X P4.0	100	156	500					
L605100R	5/8"---11WT	100	153						
L605150R		150	203						
L606100R	3/4"---10WT	100	153	800					
L606150R		150	203						

Heavy duty aluminum base leveling feet LR series

Application: Clean room equipment, aluminum extrusion equipment, high-load mechanical equipment

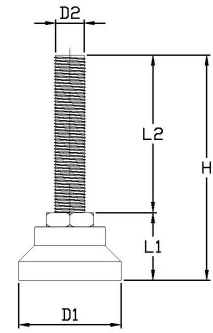
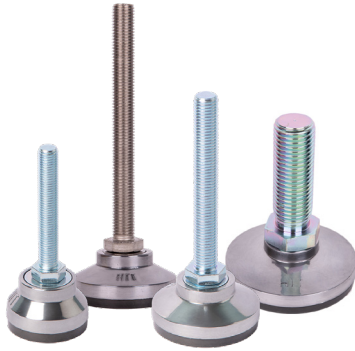


Unit: mm

Item No.	Bolt Material	Base Material	D1	L1	D2	L2	H	Load capacity (Kg)		
L9016080R	Zinc plated (SS41)	Aluminum alloy with rubber pad	90	51	M16 X P2.0	80	131	1000		
L9016100R						100	151			
L9016130R						130	181			
L9016150R						150	201			
L9016180R						180	231			
L9016200R						200	251			
L9016250R						250	301			
L9020080R					M20 X P2.5	80	131		1500	
L9020100R						100	151			
L9020130R						130	181			
L9020150R			150	201						
L9020180R			180	231						
L9020200R			200	251						
L9024100R			M24 X P3.0	100		156	1500			
L9024150R				150	206					
L9030100R				M30 X P3.5	100	156				
L9030150R					150	206				
L9036100R			M36 X P4.0	100	156					
L905100R			5/8" ---11WT	100	153	1000				
L905150R				150	203					
L906100R	3/4" ---10WT	100	152	1500						
L906150R		150	202							
L12020080R			120	51	M20 X P2.5	80		131	1500	
L12020100R						100	151			
L12020130R						130	181			
L12020150R						150	201			
L12020180R						180	231			
L12020200R						200	251			
L12024100R						M24 X P3.0	100	156		1500
L12024150R					150		206			
L12030100R					M30 X P3.5		100	156		
L12030150R							150	206		
L12036100R			M36 X P4.0	100	156					
L1206100R			3/4" ---10WT	100	152	1500				
L1206150R				150	202					

Heavy duty aluminum base leveling feet LS-R series

Application: Clean room equipment, aluminum extrusion equipment, high-load mechanical equipment

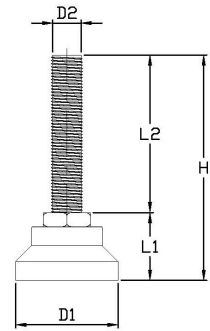
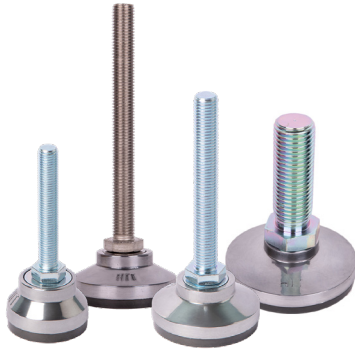


Unit: mm

Item No.	Bolt Material	Base Material	D1	L1	D2	L2	H	Load capacity (Kg)
LS6016080R	Stainless steel (SUS304)	Aluminum alloy with rubber pad	65	51	M16 X P2.0	80	131	500
LS6016100R						100	151	
LS6016130R						130	181	
LS6016150R						150	201	
LS6016180R						180	231	
LS6016200R						200	251	
LS6020080R						80	131	
LS6020100R				100	151			
LS6020130R				130	181			
LS6020150R				150	201			
LS6020180R				180	231			
LS6020200R				200	251			
LS6024100R				56	M24 X P3.0	100	156	
LS6024150R						150	206	
LS6030100R	M30 X P3.5	100	156					
LS6030150R		150	206					

Heavy duty aluminum base leveling feet LS-R series

Application: Clean room equipment, aluminum extrusion equipment, high-load mechanical equipment

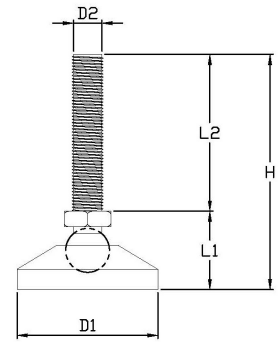


Unit: mm

Item No.	Bolt Material	Base Material	D1	L1	D2	L2	H	Load capacity (Kg)							
LS9016080R	Stainless steel (SUS304)	Aluminum alloy with rubber pad	90	51	M16 X P2.0	80	131	1000							
LS9016100R						100	151								
LS9016130R						130	181								
LS9016150R						150	201								
LS9016180R						180	231								
LS9016200R						200	251								
LS9020080R				56	M20 X P2.5	90	51	80	131	1500					
LS9020100R								100	151						
LS9020130R								130	181						
LS9020150R								150	201						
LS9020180R								180	231						
LS9020200R								200	251						
LS9024100R								56	M24 X P3.0		100	156	1500		
LS9024150R									150		206				
LS9030100R								56	M30 X P3.5		90	56	100	156	1500
LS9030150R													150	206	
LS12020080R	Stainless steel (SUS304)	Aluminum alloy with rubber pad	120	51	M20 X P2.5	80	131	1500							
LS12020100R						100	151								
LS12020130R						130	181								
LS12020150R						150	201								
LS12020180R						180	231								
LS12020200R						200	251								
LS12024100R				56	M24 X P3.0	100	156	1500							
LS12024150R					150	206									
LS12030100R				56	M30 X P3.5	120	56	100	156	1500					
LS12030150R								150	206						

Heavy duty stainless steel rotary leveling feet TCS series

Application: Clean room equipment, aluminum extrusion equipment, high-load mechanical equipment, Sloping ground

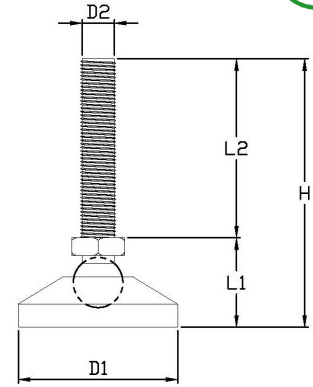


Unit: mm

Item No.	Bolt Material	Base Material	D1	L1	D2	L2	H	Load capacity (Kg)
TCS7016080	Stainless steel (SUS304)	Stainless steel (SUS304)	70	50	M16 X P2.0	80	130	2000
TCS7016100						100	150	
TCS7016150					150	200		
TCS7020100					M20 X P2.5	100	150	
TCS7020150		150	200					
TCS7016100R		Stainless steel (SUS304) with rubber pad	74	54	M16 X P2.0	100	154	2000
TCS7016150R						150	204	
TCS7020100R					M20 X P2.5	100	154	
TCS7020150R	150					204		

Heavy duty aluminum base leveling feet LC/LCS series

Application: Clean room equipment, aluminum extrusion equipment, high-load mechanical equipment, Sloping ground

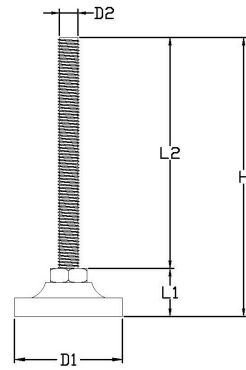


Unit: mm

Item No.	Bolt Material	Base Material	D1	L1	D2	L2	H	Load capacity (Kg)
LC7020100	Zinc plated (SS41)	Aluminum	70	42	M20 X P2.5	100	142	1500
LC7020150						150	192	
LCS7016100	M16 X P2.0				100	142	1000	
LCS7016150					150	192		
LCS7020100	M20 X P2.5				100	142	1500	
LCS7020150					150	192		
LCS10016100	Stainless steel (SUS304)		100		M16 X P2.0	100	142	1000
LCS10016150						150	192	
LCS10020100					M20 X P2.5	100	142	1500
LCS10020150						150	192	
LC7020100R	Zinc plated (SS41)	Aluminum alloy with rubber pad Electrical impedance $\leq 50K\Omega$	74	46	M20 X P2.5	100	146	1500
LC7020150R						150	196	
LCS7016100R	M16 X P2.0				100	146	1000	
LCS7016150R					150	196		
LCS7020100R	M20 X P2.5				100	146	1500	
LCS7020150R					150	196		

Heavy duty stainless steel leveling feet S series

Application: Clean room equipment, high-load mechanical equipment, Humid acid-base environment

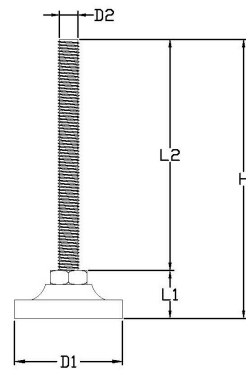


Unit: mm

Item No.	Bolt Material	Base Material	D1	L1	D2	L2	H	Load capacity (Kg)
S5016080	Stainless steel (SUS304)	Stainless steel (SUS304)	50	32	M16 X P2.0	80	112	2000
S5016100						100	132	
S5016130						130	162	
S5016150						150	182	
S5016180						180	212	
S5016200						200	232	
S5020080			M20 X P2.5		80	112	2500	
S5020100					100	132		
S5020130					130	162		
S5020150					150	182		
S5020180					180	212		
S5020200					200	232		
S7016080	Stainless steel (SUS304)	Stainless steel (SUS304)	70	32	M16 X P2.0	80	112	2000
S7016100						100	132	
S7016130						130	162	
S7016150						150	182	
S7016180						180	212	
S7016200						200	232	
S7020100			M20 X P2.5		100	132	2500	
S7020130					130	162		
S7020150					150	182		
S7020180					180	212		
S7020200					200	235		

Heavy duty stainless steel leveling feet S-R series

Application: Clean room equipment, high-load mechanical equipment, Humid acid-base environment

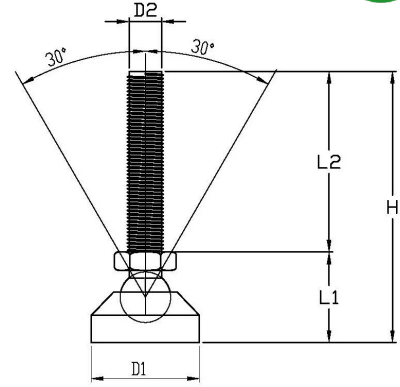


Unit: mm

Item No.	Bolt Material	Base Material	D1	L1	D2	L2	H	Load capacity (Kg)
S7016080R	Stainless steel (SUS304)	Stainless steel (SUS304) with rubber pad Electrical impedance $\leq 50K\Omega$	74	35	M16 X P2.0	80	115	2000
S7016100R						100	135	
S7016130R						130	165	
S7016150R						150	185	
S7016180R						180	215	
S7016200R						200	235	
S7020080R					M20 X P2.5	80	115	2500
S7020100R						100	135	
S7020130R						130	165	
S7020150R						150	185	
S7020180R	180	215						
S7020200R	200	235						

Nylon base rotary leveling feet C/CS series

Application: Sloping ground

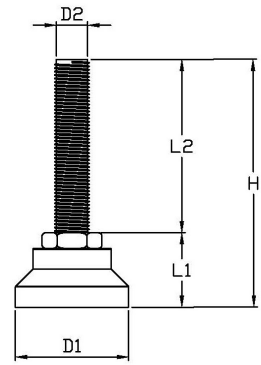


Unit: mm

Item No.	Bolt Material	Base Material	D1	L1	D2	L2	H	Load capacity (Kg)			
C6016100	Zinc plated (SS41)	Nylon	60	45	M16 X P2.0	100	145	500			
C6016150						150	195				
C9016100	100					47	M20 X P2.5		100	147	
C9016150									150	197	
C9020100T	Galvanized (SS41) one-piece molding		100	47	M20 X P2.5	100	147	800			
C9020150T						150	197				
CS6016100	Stainless steel (SUS304)		Nylon	60	45	M16 X P2.0	100	145	500		
CS6016150							150	195			
CS9016100	100						47	M16 X P2.0		100	147
CS9016150										150	197
CS6016100T	Stainless steel (SUS304) integrated molding	100		43	M16 X P2.0	100	143	500			
CS6016150T						150	193				
CS9016100T						45	100		145		
CS9016150T							150		195		
CS9020100T						47	M20 X P2.5		100	147	800
CS9020150T									150	197	

Heavy duty nylon base leveling feet D60 / DS60 series

Application: conveyor equipment , aluminum extrusion equipment, automation equipment

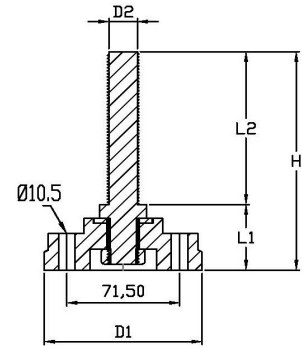


Unit: mm

Item No.	Bolt Material	Base Material	D1	L1	D2	L2	H	Load capacity (Kg)	
D6016080	Zinc plated (SS41)	Nylon	65	43	M16 X P2.0	80	123	600	
D6016100						100	143		
D6016130						130	173		
D6016150						150	193		
D6016180						180	223		
D6016200						200	243		
D6016250					250	293			
D6020080					M20 X P2.5	80	123	800	
D6020100						100	143		
D6020130						130	173		
D6020150				150		193			
D6020180				180		223			
D6020200				200		243			
D6024100				48	M24 X P3.0	100	148	800	
D6024150						150	198		
D6030100						M30 X P3.5	100		148
D6030150							150		198
D6036100				M36 X P4.0	100	148	800		
D605100				5/8" – 11WT	100	146	600		
D605150					150	196			
D606100	3/4" – 10WT	100	144	800					
D606150		150	194						
DS6016080	Stainless steel (SUS304)	Nylon	65	43	M16 X P2.0	80	123	600	
DS6016100						100	143		
DS6016130						130	173		
DS6016150						150	193		
DS6016180						180	223		
DS6016200						200	243		
DS6020080					M20 X P2.5	80	123	800	
DS6020100						100	143		
DS6020130						130	173		
DS6020150						150	193		
DS6020180				180		223			
DS6020200				200		243			
DS6024100				48	M24 X P3.0	100	148	800	
DS6024150						150	198		
DS6030100						M30 X P3.5	100		148
DS6030150							150		198

Heavy duty nylon base leveling feet D90 / DS90 series

Application: conveyor equipment , aluminum extrusion equipment, automation equipment

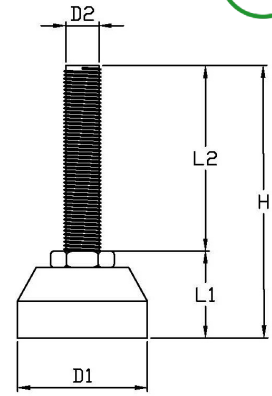


Unit: mm

Item No.	Bolt Material	Base Material	D1	L1	D2	L2	H	Load capacity (Kg)							
D9016080	Zinc plated (SS41)	Nylon	100	43	M16 X P2.0	80	123	600							
D9016100						100	143								
D9016130						130	173								
D9016150						150	193								
D9016180						180	223								
D9016200						200	243								
D9016250						250	293								
D9020080					M20 X P2.5	80	123	800							
D9020100						100	143								
D9020130						130	173								
D9020150				Stainless steel (SUS304)	Nylon	100	45	5/8"–11WT	100	145	600				
D905150									150	195					
D906100								3/4"–10WT	100	144	800				
D906150									150	194					
D9024100				M24 X P3.0	48	48	M24 X P3.0	100	148	800					
D9024150								150	198						
D9030100								M30 X P3.5	100		148	150	198		
D9030150				M36 X P4.0	100	148	150			198					
D9036100														M16 X P2.0	43
DS9016100								100	143						
DS9016130	130	173													
DS9016150	Stainless steel (SUS304)	Nylon	100	43	M16 X P2.0	150	193	600							
DS9016180						180	223								
DS9016200						200	243								
DS9020080						M20 X P2.5	80		123	800					
DS9020100							100		143						
DS9020130							130		173						
DS9020150						M24 X P3.0	48		48	M24 X P3.0	150	193	800		
DS9020180					180			223							
DS9020200					200			243							
DS9024100					M30 X P3.5			100			148	150		198	
DS9024150	M30 X P3.5	100	148	150		198									
DS9030100							M30 X P3.5		100	148			150		198
DS9030150					150			198							

Anti-vibration leveling feet R70/RS70 series

Application: Vibration machinery and equipment

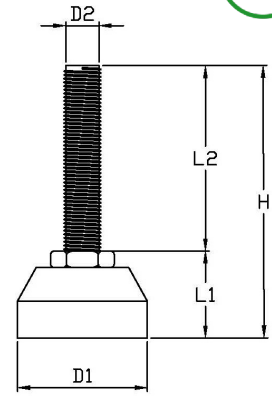


Unit: mm

Item No.	Bolt Material	Base Material	D1	L1	D2	L2	H	Load capacity (Kg)	
R7016080	Zinc plated (SS41)	Rubber	70	47	M16 X P2.0	80	127	800	
R7016100						100	147		
R7016130						130	177		
R7016150						150	197		
R7016180						180	227		
R7016200						200	247		
R7016250						250	297		
R7020080						80	127		
R7020100						100	147		
R7020130						130	177		
R7020150				150	197				
R7020180				180	227				
R7020200				200	247				
R7024100				48	M24 X P3.0	100	148		
R7024150					150	198			
R7030100					M30 X P3.5	100	148		
R7030150				150		198			
R7036100				M36 X P4.0	100	148			
R705100				50	5/8" – 11WT	100	150		
R705150						150	200		
R706100	48	3/4" – 10WT	100	148					
R706150			150	198					
RS7016080	Stainless steel (SUS304)	Rubber	70	47	M16 X P2.0	80	127	800	
RS7016100						100	147		
RS7016130						130	177		
RS7016150						150	197		
RS7016180						180	227		
RS7016200						200	247		
RS7020080						80	127		
RS7020100						100	147		
RS7020130						M20 X P2.5	130		177
RS7020150							150		197
RS7020180				180	227				
RS7020200				200	247				
RS7024100				M24 X P3.0	100	147			
RS7024150					150	197			
RS7030100				52	M30 X P3.5	100	152		
RS7030150						150	202		

Anti-vibration leveling feet R90/RS90 series

Application: Vibration machinery and equipment

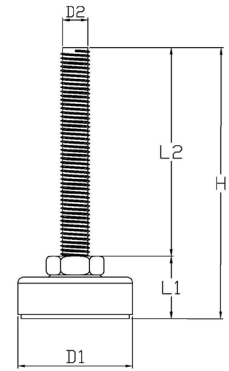


Unit: mm

Item No.	Bolt Material	Base Material	D1	L1	D2	L2	H	Load capacity (Kg)
R9016080	Zinc plated (SS41)	Rubber	90	46	M16 X P2.0	80	126	1000
R9016100						100	146	
R9016130						130	176	
R9016150						150	196	
R9016180						180	226	
R9016200						200	246	
R9016250					250	296		
R9020080					M20 X P2.5	80	126	
R9020100						100	146	
R9020130						130	176	
R9020150				150		196		
R9020180				180		226		
R9020200				200		246		
R905100				5/8"—11WT	48	100	148	
R905150					150	198		
R906100				3/4"—10WT	50	100	150	
R906150					150	200		
R9024100				M24 X P3.0	51	100	151	
R9024150						150	201	
R9030100						M30 X P3.5	100	
R9030150	150	201						
R9036100	M36 X P4.0	100	151					
RS9016080	Stainless steel (SUS304)	Rubber	90	46	M16 X P2.0	80	126	1000
RS9016100						100	146	
RS9016130						130	176	
RS9016150						150	196	
RS9016180						180	226	
RS9016200						200	246	
RS9020080					M20 X P2.5	80	126	
RS9020100						100	146	
RS9020130						130	176	
RS9020150						150	196	
RS9020180				180		226		
RS9020200				200		246		
RS9024100				M24 X P3.0	51	100	151	
RS9024150						150	201	
RS9030100						M30 X P3.5	100	
RS9030150				150	201			
RS9036100				M36 X P4.0	100		151	

Light duty anti-vibration leveling feet BN series

Application: conveyor equipment , aluminum extrusion equipment, automation equipment, slightly vibrating mechanical equipment

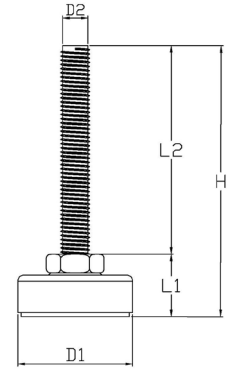


Unit: mm

Item No.	Bolt Material	Base Material	D1	L1	D2	L2	H	Load capacity (Kg)								
BN6012050	Zinc plated (SS41)	Zinc plated (SS41)	56	28	M12 X P1.75	50	78	300								
BN6012075						75	103									
BN6012100						100	128									
BN6012150						150	178									
BN6016080				30	M16 X P2.0	56	30	M16 X P2.0	80	110	500					
BN6016100									100	130						
BN6016130									130	160						
BN6016150									150	180						
BN6016180									180	210						
BN6016200									200	230						
BN6020080									M20 X P2.5	M20 X P2.5		56	30	M20 X P2.5	80	110
BN6020100															100	130
BN6020130															130	160
BN6020150															150	180
BN6020180				180	210											
BN6020200				200	230											
BN604075				28	1/2"–12WT	56	28	1/2"–12WT	75	103	300					
BN604100									100	128						
BN604150									150	178						
BN605075				30	5/8"–11WT	56	30	5/8"–11WT	75	105	500					
BN605100	100	130														
BN605150	150	180														

Light duty anti-vibration leveling feet BN series

Application: conveyor equipment , aluminum extrusion equipment, automation equipment, slightly vibrating mechanical equipment

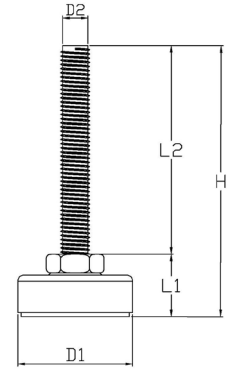


Unit: mm

Item No.	Bolt Material	Base Material	D1	L1	D2	L2	H	Load capacity (Kg)
BN8016080	Zinc plated (SS41)	Zinc plated (SS41)	74	34	M16 X P2.0	80	114	500
BN8016100						100	134	
BN8016130						130	164	
BN8016150						150	184	
BN8016180						180	214	
BN8016200						200	234	
BN8020080					M20 X P2.5	80	114	800
BN8020100						100	134	
BN8020130						130	164	
BN8020150						150	184	
BN8020180						180	214	
BN8020200						200	234	
BN805100	5/8" – 11WT	100	134	500				
BN805150		150	184					

Light duty anti-vibration ED coating leveling feet B series

Application: conveyor equipment , aluminum extrusion equipment, automation equipment, slightly vibrating mechanical equipment

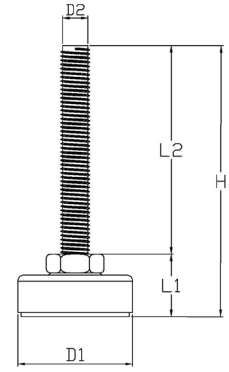


Unit: mm

Item No.	Bolt Material	Base Material	D1	L1	D2	L2	H	Load capacity (Kg)
B403075	ED Coating (Black)	ED Coating (Black)	40	20	3/8"—16WT	75	95	300
B408050					M8 X P1.25	50	70	
B408100						100	120	
B4010050				21	M10 X P1.5	50	71	
B4010100						100	121	
B4012050				22	M12 X P1.75	50	72	
B4012075						75	97	
B4012100						100	122	
B4012150						150	172	
B6012050						50	77	
B6012075			27	M16 X P2.0	75	102	400	
B6012100					100	127		
B6012150					150	177		
B6016050			30	M16 X P2.0	55	50	80	500
B6016070						70	100	
B6016100						100	130	
B6016150						150	180	
B604075			28	1/2"—12WT	55	75	103	400
B604100						100	128	
B604150						150	178	
B605100	29	5/8"—11WT	55	100	129	500		
B605150				150	179			
B8016100	33	M16 X P2.0	75	100	133	500		
B8016150				150	183			
B805100				32	5/8"—11WT		100	132
B805150							150	182

Light duty anti-vibration leveling feet BS series

Application: Clean room equipment, Stainless steel equipments, Humid environment, Vibration machinery and equipment

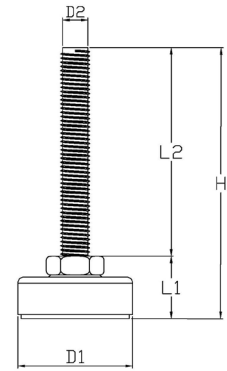


Unit: mm

Item No.	Bolt Material	Base Material	D1	L1	D2	L2	H	Load capacity (Kg)		
BS408050	Stainless steel (SUS304)	Stainless steel (SUS304) with rubber pad Electrical impedance <1000KΩ	40	20	M8 X P1.25	50	70	200		
BS4010050						50	72			
BS4010075						75	97			
BS4010100						22	M10 X P1.5	100	122	400
BS4012050						23	M12 X P1.75	50	73	
BS4012075								75	98	
BS4012100								100	123	
BS4012150								150	173	
BS404050								1/2" – 12WT		
BS404075						75	98			
BS404100			100	123						

Light duty anti-vibration leveling feet BS series

Application: Clean room equipment, Stainless steel equipments, Humid environment, Vibration machinery and equipment

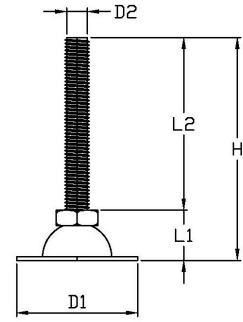


Unit: mm

Item No.	Bolt Material	Base Material	D1	L1	D2	L2	H	Load capacity (Kg)		
BS5512050	Stainless steel (SUS304)	Stainless steel (SUS304) with rubber pad Electrical impedance <1000KΩ	55	27	M12 X P1.75	50	77	400		
BS5512075						75	102			
BS5512100						100	127			
BS5512150						150	177			
BS5516050			55	30	M16 X P2.0	50	80	500		
BS5516080						80	110			
BS5516100						100	130			
BS5516130						130	160			
BS5516150						150	180			
BS5516180						180	210			
BS5516200						200	230			
BS554050						27	1/2" – 12WT		50	77
BS554075			102							
BS554100			127							
BS554150			29	5/8" – 11WT	100	129	500			
BS555100						179				
BS6012050			Stainless steel (SUS304)	Stainless steel (SUS304) with rubber pad Electrical impedance <1000KΩ	60	33	M12 X P1.75	50	83	400
BS6012075								75	108	
BS6012100								100	133	
BS6012150								150	183	
BS6016050	60	36			M16 X P2.0	50	86	500		
BS6016080						80	116			
BS6016100						100	136			
BS6016130						130	166			
BS6016150						150	186			
BS6016180						180	216			
BS6016200						200	236			
BS604050						33	1/2" – 12WT		50	83
BS604075	108									
BS604100	133									
BS604150	135									
BS605100	35	5/8" – 11WT			100	185	500			
BS605150						185				

Light duty leveling feet A series

Application: Mechanical equipment

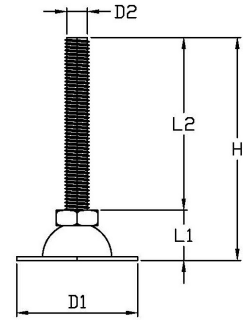


Unit: mm

Item No.	Bolt Material	Base Material	D1	L1	D2	L2	H	Load capacity (Kg)	
A324075	Zinc plated (SS41)	Zinc plated (SS41)	32	17	1/2"–12WT	75	92	200	
A504075			50	20		75	95		
A6012075			60	23	23	M12 X P1.75	75		98
A6012100							100		123
A6012150						150	173		
A6016080						M16 X P2.0	80		103
A6016100			100	123					
A6016130			130	153					
A6016150			150	173					
A6016180			180	203	300				
A6016200			200	223					
A604075			1/2"–12WT	75		98			
A604100				100		123			
A604150			150	173	200				
A605075			5/8"–11WT	75		103			
A605100				100	128				
A605150				150	178	300			

Light duty leveling feet A series

Application: Mechanical equipment

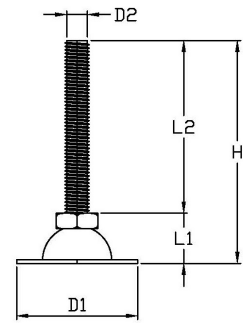


Unit: mm

Item No.	Bolt Material	Base Material	D1	L1	D2	L2	H	Load capacity (Kg)		
A7016080	Zinc plated (SS41)	Zinc plated (SS41)	70	29	M16 X P2.0	80	109	300		
A7016100						100	129			
A7016130						130	159			
A7016150						150	179			
A7016180						180	209			
A7016200						200	229			
A7020080						80	109			
A7020100					100	129				
A7020130					M20 X P2.5	130	159			
A7020150						150	179			
A7020180						180	209			
A7020200						200	229			
A704075					26	1/2"—12WT	75		101	200
A9016080					Zinc plated (SS41)	Zinc plated (SS41)	90		27	M16 X P2.0
A9016100			100	127						
A9016130			130	157						
A9016150			150	177						
A9016180			180	207						
A9016200			200	227						
A9020080			80	107						
A9020100	100	127								
A9020130	M20 X P2.5	130	157							
A9020150		150	177							
A9020180		180	207							
A9020200		200	227							
A905075	30	5/8"—11WT	75	105				180		
A905100			100	130						
A905150			150	180						

Light duty stainless steel leveling feet AS series

Application: Clean room equipment, humid environment

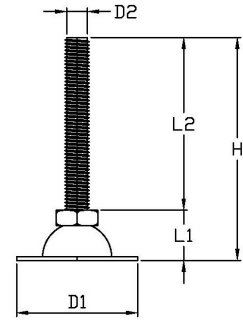


Unit: mm

Item No.	Bolt Material	Base Material	D1	L1	D2	L2	H	Load capacity (Kg)
AS5010050	Stainless steel (SUS304)	Stainless steel (SUS304)	50	18	M10 X P1.5	50	68	200
AS5010075						75	93	
AS5010100						100	118	
AS5012050				20	M12 X P1.75	50	70	300
AS5012075						75	95	
AS5012100						100	120	
AS504050			1/2"–12WT	50	70	300		
AS504075				75	95			
AS504100				100	120			

Light duty stainless steel leveling feet AS series

Application: Clean room equipment, humid environment

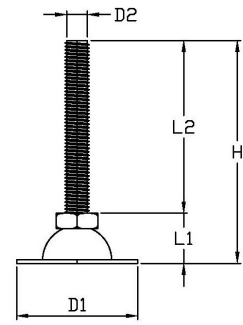


Unit: mm

Item No.	Bolt Material	Base Material	D1	L1	D2	L2	H	Load capacity (Kg)		
AS6012050	Stainless steel (SUS304)	Stainless steel (SUS304)	60	27	M12 X P1.75	50	77	300		
AS6012075						75	102			
AS6012100						100	127			
AS6012150						150	177			
AS6016050				29	M16 X P2.0	50	79	500		
AS6016080						80	109			
AS6016100						100	129			
AS6016130						130	159			
AS6016150				150	179	500				
AS6016180				180	209					
AS6016200			200	229						
AS604050			27	1/2"–12WT	50		77	300		
AS604075					75	102				
AS604100			32	5/8"–11WT	70	29	M16 X P2.0	100	132	500
AS605100								150	182	
AS605150								150	182	
AS7012050			Stainless steel (SUS304)	Stainless steel (SUS304)	70	27	M12 X P1.75	50	77	300
AS7012075								75	102	
AS7012100								100	127	
AS7012150								150	177	
AS7016050	29	M16 X P2.0				50	79	500		
AS7016080						80	109			
AS7016100						100	129			
AS7016130						130	159			
AS7016150	150	179				500				
AS7016180	180	209								
AS7016200	200	229								
AS704050	27	1/2"–12WT			50		77	300		
AS704075					75	102				
AS704100	32	5/8"–11WT			70	29	M16 X P2.0	100	132	500
AS705100								150	182	
AS705150								150	182	

Light duty anti-vibration leveling feet AS-R series

Application: Clean room equipment, humid environment

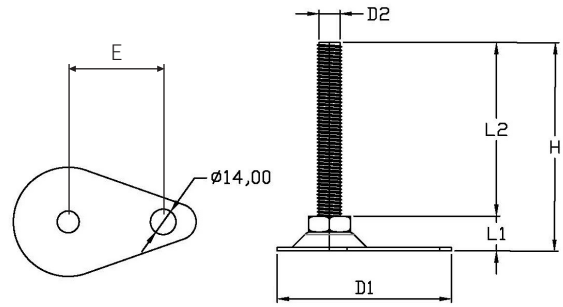


Unit: mm

Item No.	Bolt Material	Base Material	D1	L1	D2	L2	H	Load capacity (Kg)				
A7016080R	Zinc plated (SS41)	Zinc plated (SS41) with rubber pad	78	29	M16 X P2.0	80	113	300				
A7016100R						100	133					
A7016130R						130	163					
A7016150R						150	183					
A7016180R						180	213					
A7016200R						200	233					
A7020080R						M20 X P2.5	80		113			
A7020100R					100		133					
A7020130R					130		163					
A7020150R					150		183					
A7020180R					180		213					
A7020200R					200		233					
A704075R									26	1/2"–12WT	75	105
AS7012050R					Stainless steel (SUS304)	Stainless steel (SUS304) with rubber pad	78		31	M12 X P1.75	50	81
AS7012075R	75	106										
AS7012100R	100	131										
AS7012150R	150	181										
AS7016050R	33	M16 X P2.0	33	M16 X P2.0				50	83	500		
AS7016080R								80	113			
AS7016100R								100	133			
AS7016130R								130	163			
AS7016150R								150	183			
AS7016180R								180	213			
AS7016200R	200	233										
AS704050R	31	1/2"–12WT	31	1/2"–12WT				50	81	300		
AS704075R								75	106			
AS704100R	33	5/8"–11WT	33	5/8"–11WT				100	131	500		
AS705100R								100	133			
AS705150R								150	183			

Light duty hole anchor leveling feet F/FS series

Application: conveyor equipment ,cleanroom fence

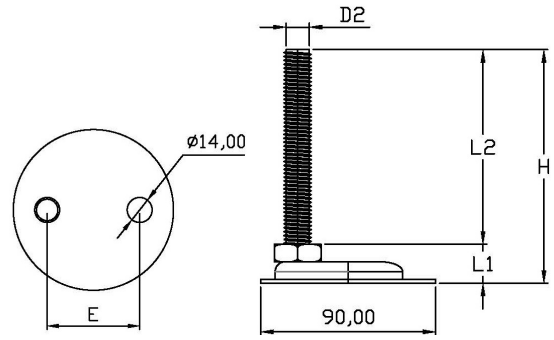


Unit: mm

Item No.	Bolt Material	Base Material	D1	L1	D2	L2	E	H	Load capacity (Kg)				
F6012075	Zinc plated (SS41)	Zinc plated (SS41)	100	21	M12 X P1.75	75	52	96	200				
F6012100						100		121					
F6012150						150		171					
F6016080				24	M16 X P2.0	100		80	104	300			
F6016100								100	124				
F6016130								130	154				
F6016150								150	174				
F6016180								180	204				
F6016200								200	224				
F604075				21	1/2"—12WT	100		75	96	200			
F604100								100	121				
F604150								150	171				
F605100								23	5/8"—11WT		100	123	300
F605150												150	
FS7012050				Stainless steel (SUS304)	Stainless steel (SUS304)	115		23	M12 X P1.75	50	69	73	200
FS7012075	75	98											
FS7012100	100	123											
FS7012150	150	173	300										
FS7016080	25	M16 X P2.0					100	80	105				
FS7016100								100	125				
FS7016130								130	155				
FS7016150								150	175				
FS7016180								180	205				
FS7016200			200					225					
FS704050	23	1/2"—12WT	100				50	73	200				
FS704075							75	98					
FS704100							100	123					
FS705100	25	5/8"—11WT	100				125	300					
FS705150							150		175				

Light duty hole anchor leveling feet M/MS series

Application: conveyor equipment , cleanroom fence

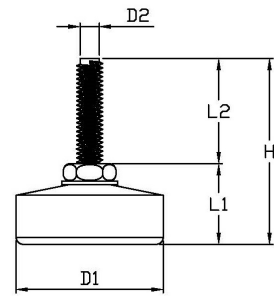


Unit: mm

Item No.	Bolt Material	Base Material	D1	L1	D2	L2	E	H	Load capacity (Kg)				
M9012075	Zinc plated (SS41)	Zinc plated (SS41)	90	21	M12 X P1.75	75	50	96	200				
M9012100						100		121					
M9012150						150		171					
M9016080				25	M16 X P2.0	25	M16 X P2.0	80	50	105	300		
M9016100								100		125			
M9016130								130		155			
M9016150								150		175			
M9016180								180		205			
M9016200								200		225			
M904100				21	1/2"—12WT	21	1/2"—12WT	100	50	121	200		
M904150								150		171			
M905100								26		5/8"—11WT		26	5/8"—11WT
M905150	150	176											
MS9012050	Stainless steel (SUS304)	Stainless steel (SUS304)	90	21	M12 X P1.75	50	50	71	200				
MS9012075						75		96					
MS9012100						100		121					
MS9012150				150	171	25	M16 X P2.0	25	50	105	300		
MS9016080				80	105								
MS9016100				100	125								
MS9016130				130	155								
MS9016150				150	175								
MS9016180				180	205								
MS9016200				200	225	21	1/2"—12WT	21	50	71	200		
MS904050				50	71								
MS904075				75	96								
MS904100				100	121	26	5/8"—11WT	26	50	126	300		
MS905100				100	126								
MS905150				150	176								

Light duty non-slip leveling feet G series

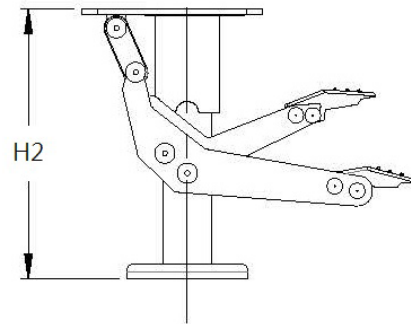
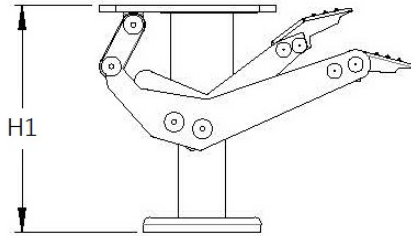
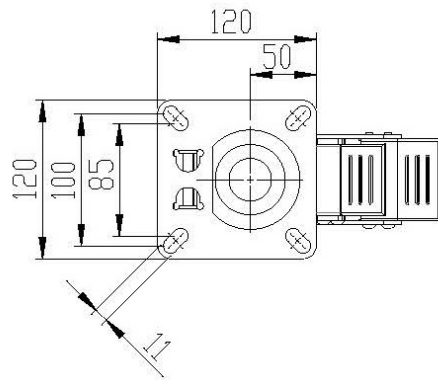
Application: display racks, furniture, light duty machinery and equipments



Unit: mm

Item No.	Bolt Material	Base Material	D1	L1	D2	L2	H	Load capacity (Kg)				
G290625	Zinc plated (SS41)	Stainless steel (SUS304) Nylon	29	10	M6 X P1.0	25	35	50				
G350625			35	16			M8 X P1.25		30	41		
G3508030				21						51		
G4208030			42	23	M10 X P1.5	50	73		100			
G4210050										3/8" — 16WT	50	73
G423050												
G5010050			ED Coating (Black)	ED Coating (Black)	50	16	M10 X P1.5		80	96	100	
G291050	29	16			M10 X P1.5			50				66
G291080	29	16			M10 X P1.5			80				96

適用範圍：高空升降台車用



Unit: mm

Item No.	Material	Applicable caster size	H1	H2	Weight(Kg)	Load capacity (Kg)
SH004	Bright Chrome	100	125	150	1.6	200
SH005		125	154	180	1.7	
SH006		150	170	210	1.8	300
SH008		200	215	255	2	